

There is Life After SATA

KIOXIA

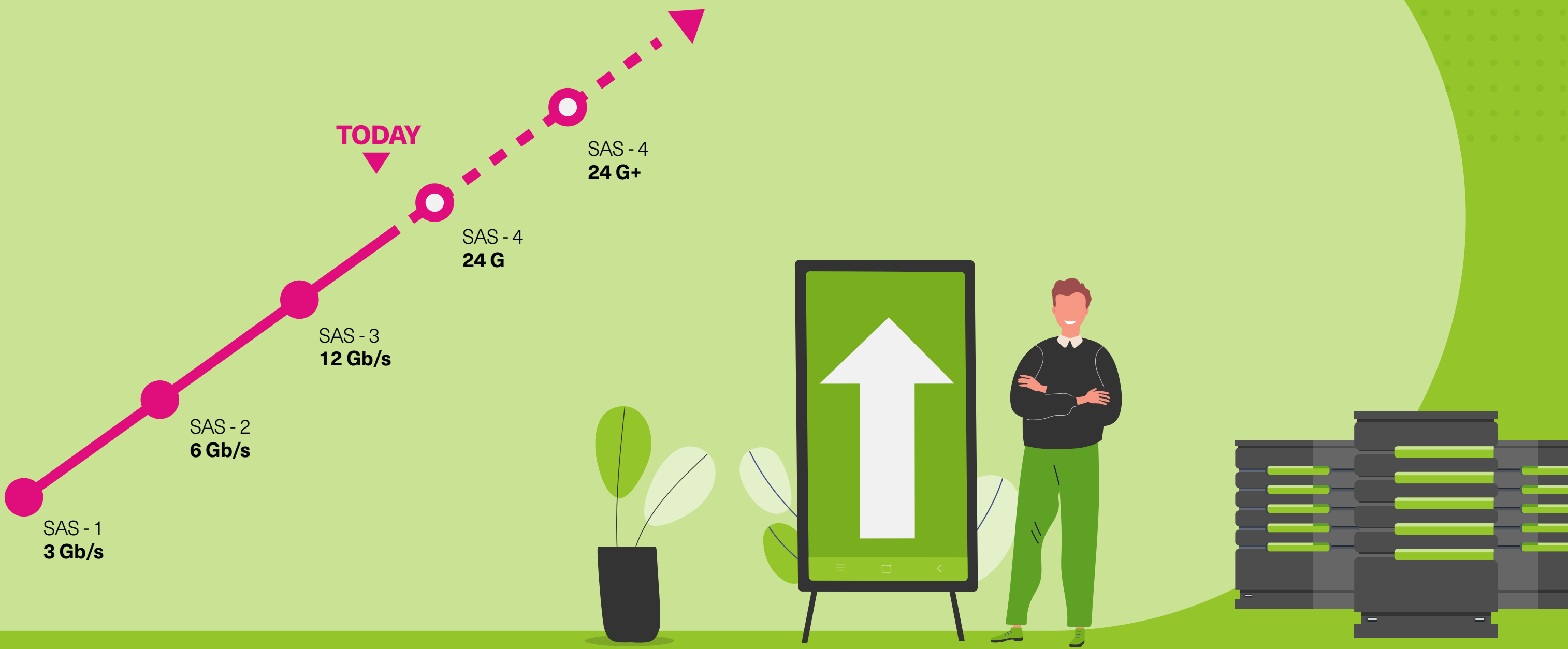
Upgrade your hyperconverged platform performance with Value SAS and Enterprise SAS over SATA SSDs

SATA Performance Roadmap Ends at 6 Gb/s



Serial Attached SCSI Technology Longevity

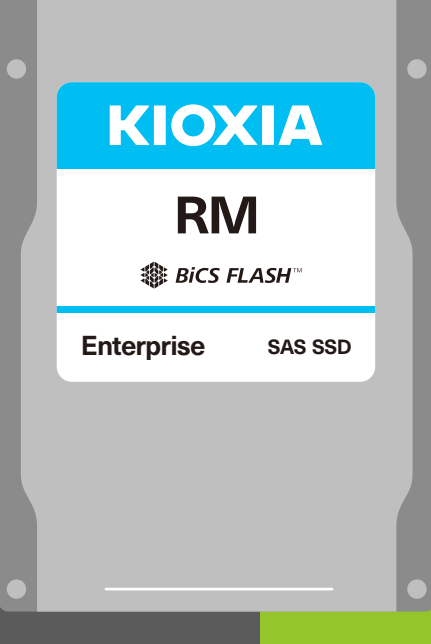
Serial Attached SCSI (SAS)



SAS interface roadmap continues for years to come

A Better Life with KIOXIA SAS SSD Solutions

Value SAS SSDs

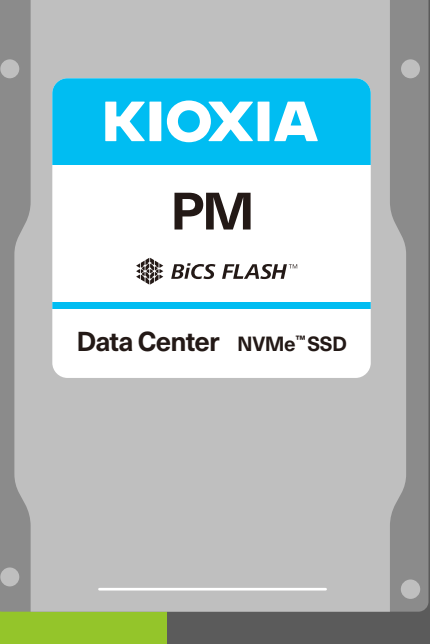


Priced to Replace SATA

Single-Port 12Gb/s SAS Interface

RM Series Performance
Sequential reads up to **838 MB/s**
Random reads up to **150,000 IOPS**

Easy Replacement in SAS-Enabled Servers



Enterprise SAS SSDs

Highest performance KIOXIA SAS SSD

Dual-port enterprise SAS Interface

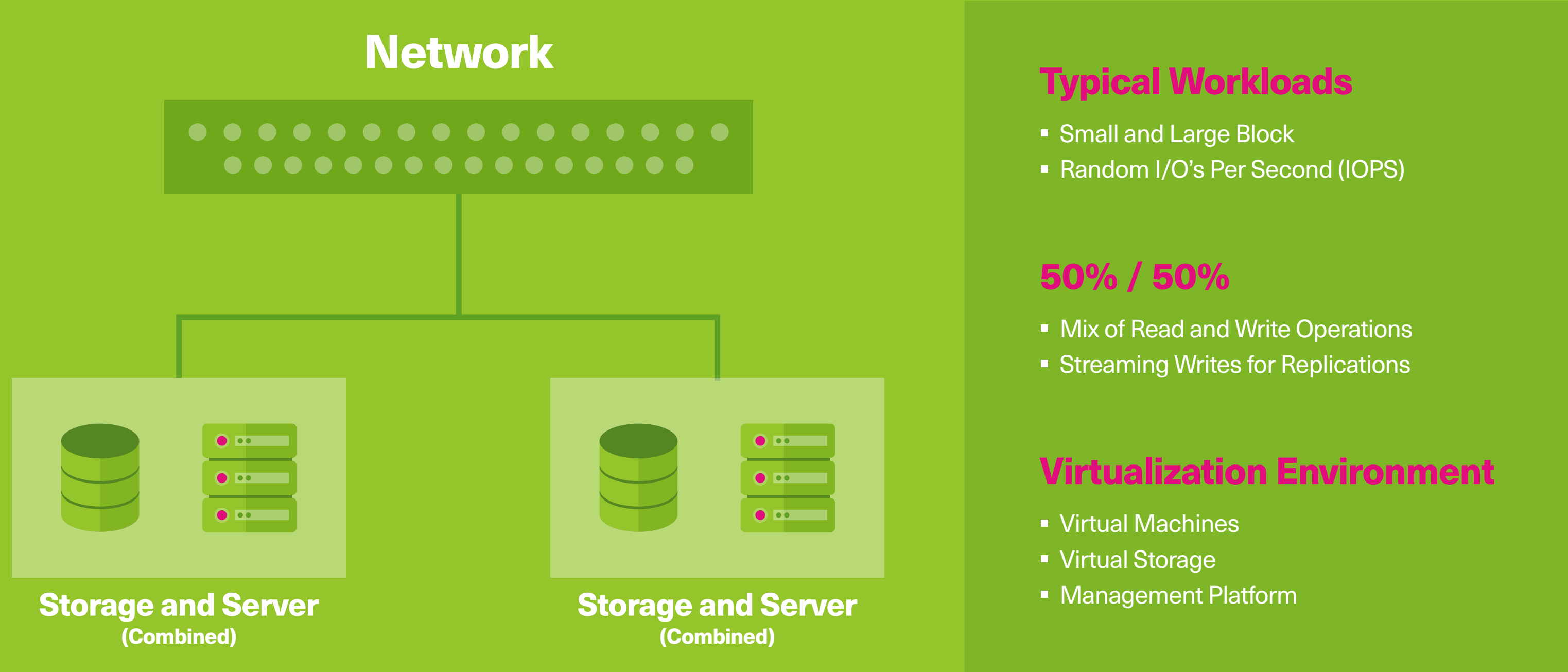
PM Series 12Gb/s SAS Performance
Sequential reads up to **4,150 MB/s**
Random reads up to **595,000 IOPS**

Performance for virtualization caching tier

RM and PM Series SAS SSDs are a Good Fit for Virtualized Workloads



Hyperconverged Infrastructure (HCI) Environments Host a Variety of Workloads



Real-world Application Benefits of Value and Enterprise SAS in Hyperconverged Infrastructure Compared to SATA¹

SAS IOPS Performance 124% More IOPS than SATA	SAS Throughput Performance 124% Faster Throughput than SATA	SAS Read Latency 82% Lower Latency than SATA
---	---	--

Server Configuration 3x HPE ProLiant DL385 Gen10 Plus v2 servers · Dual AMD EPYC™ 7543 2.8GHz 32-core CPUs · 256 GB DDR4 DRAM per server	SAS SSD Configuration 3x KIOXIA PM Series 3.2 TB for cache layer · Model: KPM6XMUG3T20 (HPE P/N: P26299-004) 12x KIOXIA RM Series 3.84 TB for capacity · Model: KRM5XRUG3T84 (HPE P/N: V0003840RWUFB)
Software Environment · VMware ESXi™, 7.0.3, Build: 19482537 · VMware vSAN™ 7.0, Update 3(d), Build 19482537 · VMware vCenter™ Version: 7.0.3, Build: 19717403 · HCI Bench Version: 2.6.1 benchmark	SATA SSD Configuration 3x 6Gb/s SATA SSD 960 GB for cache layer · HPE P/N: VK000960GWSRT 12x 6Gb/s SATA SSD 3.84 TB for capacity · HPE P/N: VK003840GWSRV



KIOXIA

¹ Performance testing was performed in a KIOXIA lab environment, May 2022.

© 2022 KIOXIA America, Inc. All rights reserved. Information in this document, including product pricing and specifications, content of services, and contact information is current and believed to be accurate on the date of this document, but is subject to change without prior notice. Technical and application information contained here is subject to the most recent applicable KIOXIA product specifications. Dell Technologies, Dell, Dell EMC, and other trademarks are trademarks of Dell Inc. or its subsidiaries. HPE and ProLiant are registered or unregistered trademarks of Hewlett Packard Enterprise Company and/or its affiliates. VMware ESXi, vSAN and vCenter are registered or unregistered trademarks of VMware, Inc. in the United States and/or various jurisdictions. All other product names are the trademarks of their respective owners.

For performance measurements, read and write speeds may vary depending on the host device, read and write conditions and file size.